



**K.L.E. Society's**  
**SHRI KADASIDDHESHWAR ARTS COLLEGE AND**  
**H. S. KOTAMBRI SCIENCE INSTITUTE**  
**VIDYANAGAR, HUBBALLI-580031 (Karnataka State)**

*Accredited at 'A' Grade with 3.18 CGPA by NAAC*

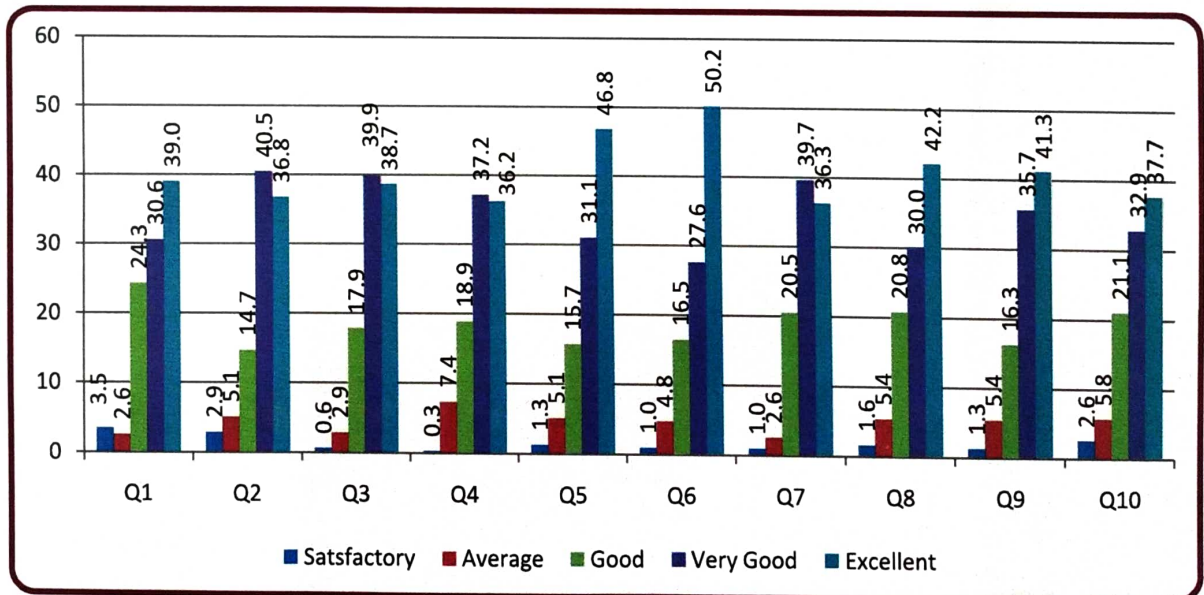
Office: 0836-2372097


Website: skahsk.com

E-mail: [skahsk\\_hbl@yahoo.co.in](mailto:skahsk_hbl@yahoo.co.in)

**Feedback analysis of Students on Curriculum (%): 2020-21(CBCS)**

Sl No.	Parameters	1	2	3	4	5
		Satisfactory	Average	Good	Very Good	Excellent
1	Relevance of syllabbi	3.5	2.6	24.3	30.6	39.0
2	Choice Based Credit System (CBCS) provides scope to learn multiple subjects	2.9	5.1	14.7	40.5	36.8
3	Scope for participatory and experiential learning	0.6	2.9	17.9	39.9	38.7
4	Suitable methods incorporated for delivering the curriculum	0.3	7.4	18.9	37.2	36.2
5	Ability to support higher education	1.3	5.1	15.7	31.1	46.8
6	Syllabus gives an insight into competitive examinations	1.0	4.8	16.5	27.6	50.2
7	Inculcates ethical values and social responsibilities	1.0	2.6	20.5	39.7	36.3
8	Prospects for Employment	1.6	5.4	20.8	30.0	42.2
9	Syllabus is skill oriented	1.3	5.4	16.3	35.7	41.3
10	Credit Bank boosts academic performances	2.6	5.8	21.1	32.9	37.7

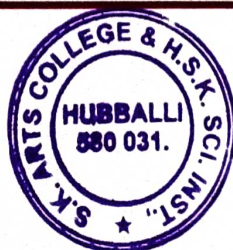
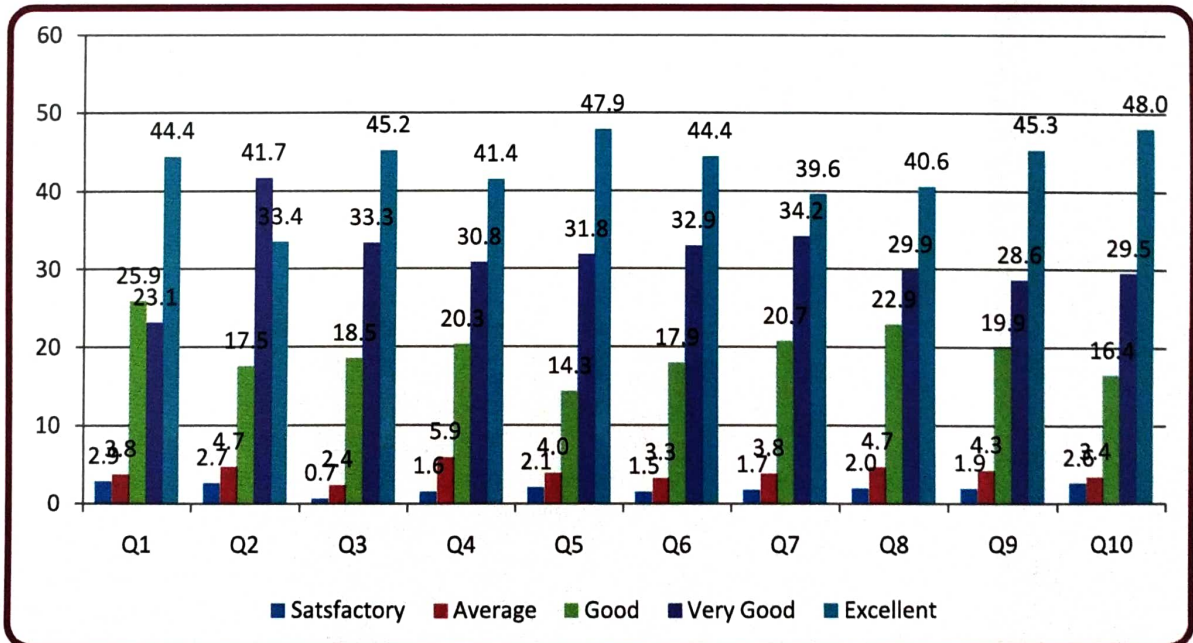


  
**PRINCIPAL,**  
**S.K.Arts College & H.S.K. Sci. Inst**  
**HUBBALLI-31**



### Feedback analysis of Students on Curriculum (%): 2020-21 (Non-CBCS)

Sl No.	Parameters	1	2	3	4	5
		Satisfactory	Average	Good	Very Good	Excellent
1	Relevance of syllabi.	2.9	3.8	25.9	23.1	44.4
2	Diversity in the curriculum	2.7	4.7	17.5	41.7	33.4
3	Scope for participatory and experiential learning	0.7	2.4	18.5	33.3	45.2
4	Syllabus includes current trends and development	1.6	5.9	20.3	30.8	41.4
5	Ability to support higher education	2.1	4.0	14.3	31.8	47.9
6	Syllabus gives an insight into competitive examinations	1.5	3.3	17.9	32.9	44.4
7	Inculcates ethical values and social responsibilities	1.7	3.8	20.7	34.2	39.6
8	Prospects for Employment	2.0	4.7	22.9	29.9	40.6
9	Syllabus is skill oriented	1.9	4.3	19.9	28.6	45.3
10	Overall rating	2.6	3.4	16.4	29.5	48.0

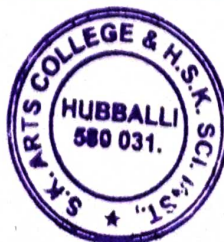
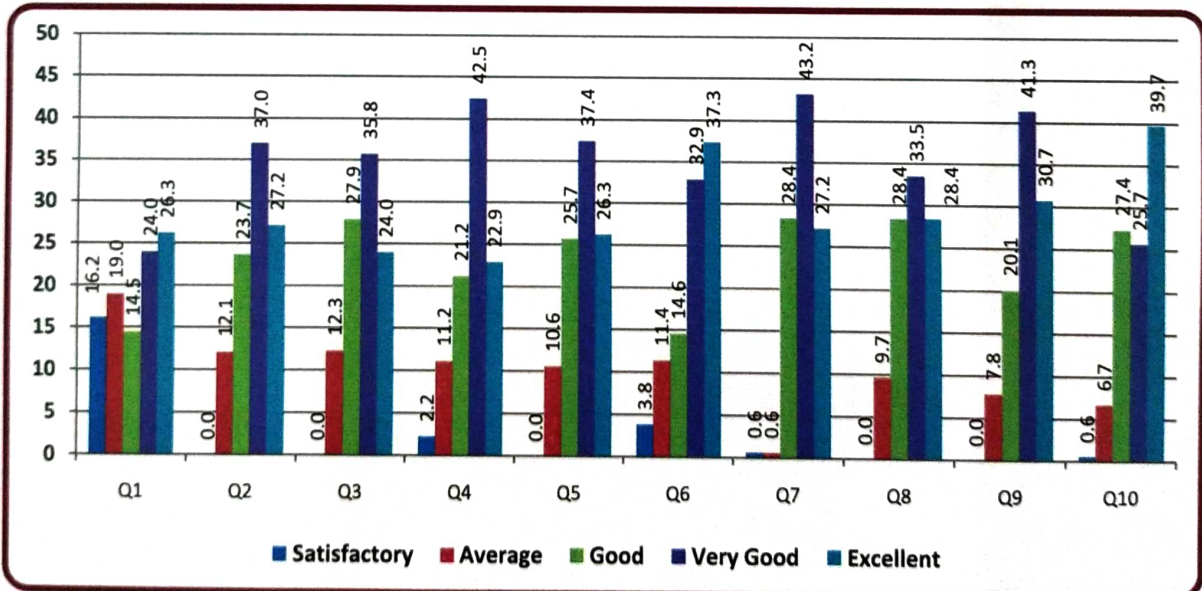


  
**PRINCIPAL,**  
**S.K.Arts College & H.S.K. Sci. Inst**  
**HUBBALLI-31**



**Feedback analysis of Alumni on Curriculum (%): 2020-21**

Sl No.	Parameters	1	2	3	4	5
		Satisfactory	Average	Good	Very Good	Excellent
1	Relevance of syllabi.	16.20	18.99	14.53	24.02	26.26
2	Diversity in the curriculum	0.00	12.14	23.70	36.99	27.17
3	Scope for participatory and experiential learning	0.00	12.29	27.93	35.75	24.02
4	Syllabus includes current trends and development	2.23	11.17	21.23	42.46	22.91
5	Ability to support higher education	0.00	10.61	25.70	37.43	26.26
6	Syllabus gives an insight into competitive examinations	3.80	11.39	14.56	32.91	37.34
7	Inculcates ethical values and social responsibilities	0.62	0.62	28.40	43.21	27.16
8	Prospects for Employment	0.00	9.66	28.41	33.52	28.41
9	Syllabus is skill oriented	0.00	7.82	20.11	41.34	30.73
10	Overall rating	0.56	6.70	27.37	25.70	39.66

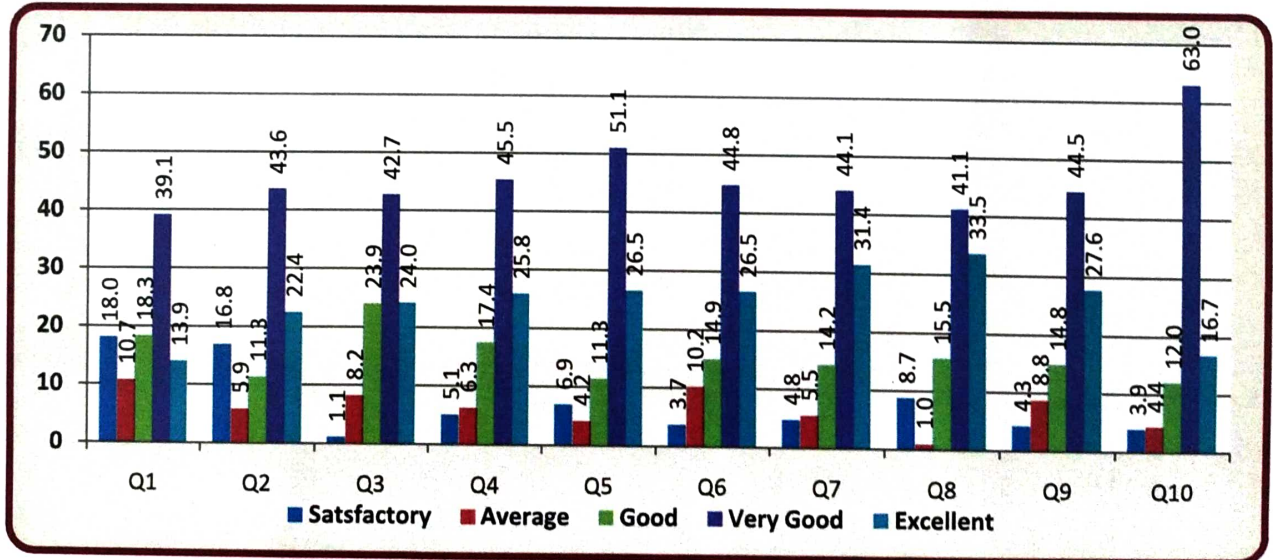



*Amr N.V.*  
**PRINCIPAL,**  
**S.K.Arts College & H.S.K. Sci. Inst**  
**HUBBALLI-31**



### Feedback analysis of Faculty on Curriculum (%): 2020-21

Sl No.	Parameters	1	2	3	4	5
		Satisfactory	Average	Good	Very Good	Excellent
1	Quality and content of the curriculum.	17.99	10.73	18.27	39.10	13.91
2	Sequenced distribution of syllabus through all the semesters.	16.79	5.90	11.31	43.60	22.40
3	Availability of teaching resources.	1.13	8.22	23.91	42.71	24.03
4	Correlation between theory and applications	5.06	6.30	17.40	45.46	25.78
5	Need to review the syllabus	6.91	4.24	11.33	51.06	26.46
6	Curriculum meets the needs of the employability	3.69	10.18	14.88	44.78	26.47
7	Scope for enrichment of knowledge	4.78	5.54	14.22	44.07	31.39
8	Assures over all development of students	8.75	1.02	15.54	41.14	33.54
9	Motivates the young minds to take up research	4.28	8.76	14.83	44.49	27.63
10	Overall rating	3.90	4.41	12.00	63.03	16.67



  
**PRINCIPAL,**  
**S.K.Arts College & H.S.K. Sci. Inst**  
**HUBBALLI-31**

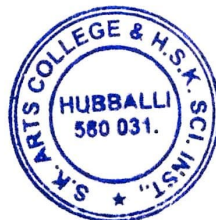


### Feedback analysis of Employer on Curriculum (%)

Q No.	Parameters	Satisfactory	Average	Good	Very Good	Excellent
1	Adequacy of curriculum	0.00	11.11	11.11	27.78	50.00
2	Enhances intellectual ability	5.56	5.56	27.78	44.44	16.67
3	Promotes knowledge of practical skills	5.56	0.00	22.22	27.78	44.44
4	Quest for innovative thinking	5.56	5.56	16.67	50.00	22.22
5	Ability to relate theory to practice	0.00	5.56	33.33	33.33	27.78
6	Capability to handle challenges	5.56	0.00	16.67	44.44	33.33
7	Develops competency for jobs	5.56	5.56	44.44	27.78	16.67
8	Scope for entrepreneurship	0.00	16.67	5.56	27.78	50.00
9	Overall Rating	5.56	0.00	22.22	33.33	38.89



*[Signature]*  
 Coordinator  
 K.L.E. Society's  
 Arts College and H.S.K. Science Institute  
 HUBBALLI - 580 031



*[Signature]*  
 PRINCIPAL,  
 S.K.Arts College & H.S.K. Sci. Inst  
 HUBBALLI-31